



مؤسسة تحسين الأرض للمقاولات Ground Improvements Contracting Est.



حلول نزع المياه

DEWATERING LAND DRAINING

PROFILE

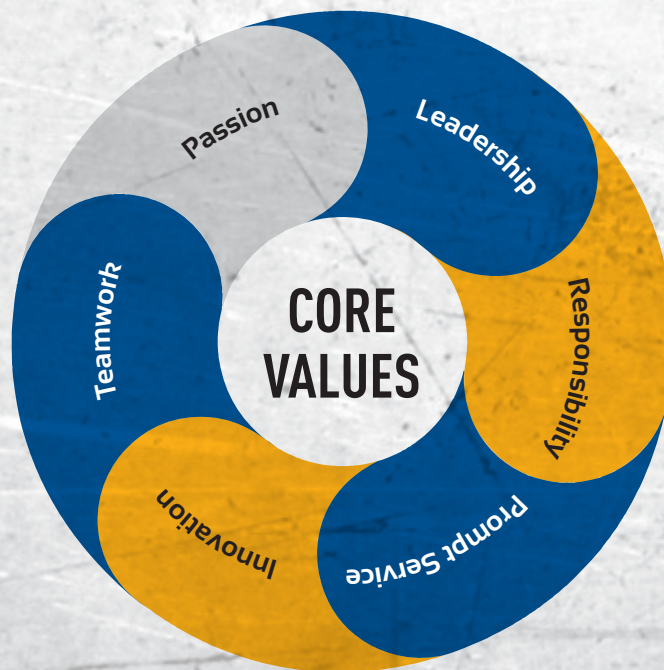
CARBONDALE MIDDLE EAST. is a dream foreseen by versatile, enterprising and visionary minds, which was realized in the year of 2000. It was a time when infrastructure and development in the region was just starting and there was pressing requirement for locally supplied infrastructure and engineering solutions to cater to the growing needs of all the gulf countries.

CME is an idea nurtured and nourished by vision, hard work, vast experience and the dedication of it's team. CME has evolved into practice dimensions to achieve the highest engineering standards. CME started with a few machines and small workforce .At present we are having more than 200 technical staff and operates from our different sites. Progressively the company has built into reputation as a one-stop-ground engineering -company able to satisfy the entire marine, construction and oil filed industries. To compliment this success we became an ISO 9002 certified company.

GIC was formed in 2008 by a team of industry professional, backed by a substantial academic research team to provide an unparalleled range of dewatering, shoring and sheet piling services to the Saudi Arabian construction market. Over the past 8 years GIC has established itself as a leading contractor in the provision of temporary or permanent sheet piling and dewatering systems to a wide range of end-users, from major construction sites and commercial outlets to the prestigious projects

The company provides a professional and highly effective groundwater control service and sheet piling work where successful results are assured. We have received praise for our effectiveness, technical excellence and our approach to projects. GIC always focus on the specific needs of individual clients throughout any contract and offer creative, enterprising and cost effective solutions to all types of groundwater problems. GIC is well placed to respond quickly to individual site needs, throughout the Saudi Arabia.

GIC is built on a heritage of delivery excellence, industry knowledge and the expertise of its people. We look forward to receiving your enquiries and assuring you of our best services at all times.



OUR MISSION

Ground Improvements Cont. Est. is dedicated to providing "COMPLETE" dewatering service to the construction industry. Our mission is to diversify and grow so that we can offer even more effective service to the growing demands of the industry. Our objective is to provide solution and service that are unique in the industry, fully satisfying any needs and grow in a positively creative environment. We will provide pumps, dewatering equipment of highest quality and support their use with technical competence and prompt and satisfactory service. We will earn and maintain the reputation of being the most knowledgeable, reliable and customer supportive company in our industry and we will be good ambassadors to foreign market as we become global supplier of pumps, dewatering equipment and expertise.

EARTH RETAINING SYSTEM SHEET PILING



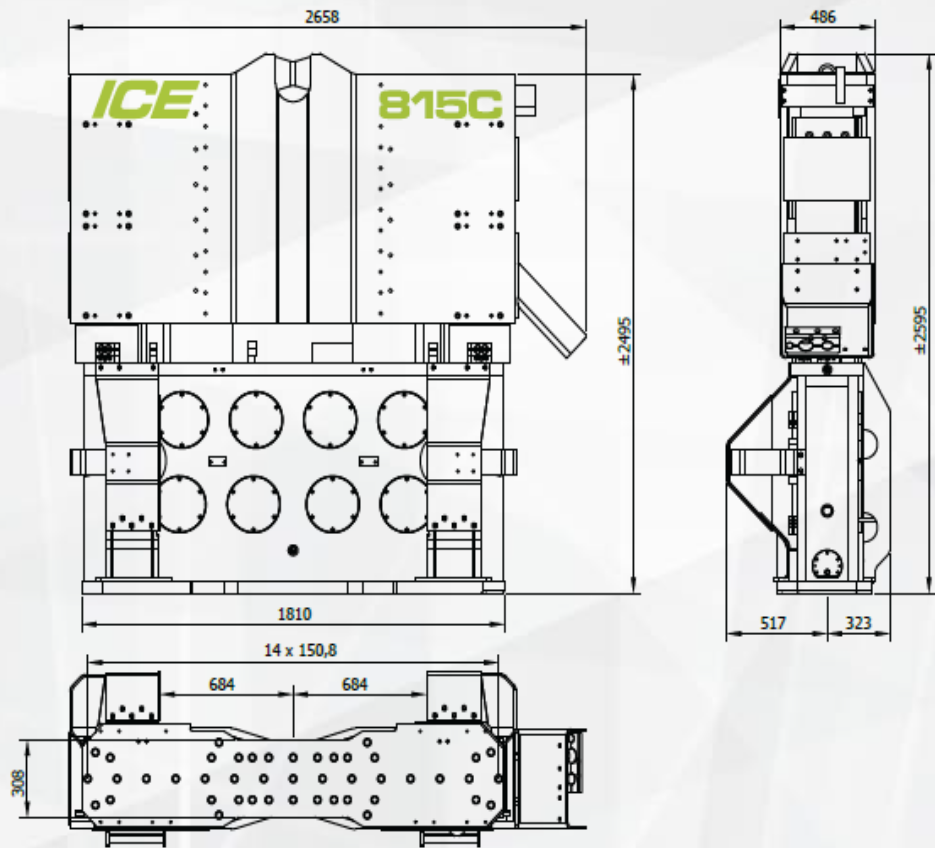
Sheet piling is a form of driven piling using thin interlocking sheets of steel to obtain a continuous barrier in the ground where the soil condition is poor.

Applications

- All kinds of Excavation
- Trench Excavation
- Foundation Pit
- Underground Bldg. Excavation
- Thrust Boring Pit
- Anchor Block Excavation
- Deep Excavation

Ground Improvements Cont. Est. exclusive design means a system that is less expensive to purchase and install, compared to competing products.





Specifications		815C		
Eccentric moment	46	kgm	Clamps:	
Max. centrifugal force	1250	kN	Sheet pile clamp	160TU
Max. frequency	1570	rpm	Transport weight per piece	1100 kg
Max. amplitude excluding 160 TU	23,3	mm	Tube clamps	81TC
Max. amplitude including 160 TU	18,2	mm	Transport weight per piece	480 kg
Max. static line-pull	400	kN	Powerpack:	
Max. operating pressure	350	bar	Model	600 series
Max. oil flow	610	l/min	Hose set:	
Forced lubrication	yes		Length	40 m
Dynamic weight excluding 160 TU	3950	kg	Transport weight	845 kg
Dynamic weight including 160 TU	5050	kg		
Total weight excluding 160 TU & hoses	7450	kg		





The main components of this type of shoring system are vertical steel wide flange beams known as soldier piles and horizontal timber lagging. The soldier piles can either be placed in drilled holes or installed by driving the beams in the ground. The soil must have sufficient cohesion and stability to retain a vertical face until the lagging can be installed between the soldier piles

Applications

- All Kinds of Excavation
- Zero Vibration Area

Ground Improvements Cont. Est. is more than 10 years experienced in the design and installation of wooden shoring, H Beam Shoring, H Pile driving in various projects in Saudi Arabia



DEWATERING DEEP WELL SYSTEM



A deep well system consists of an array of bored wells, each fitted with a multi-stage electric submersible borehole pump. As water is pumped from each well, the groundwater is lowered creating a cone of depression or drawdown around itself.

Applications

- Deep Excavation
- Wide area Excavation
- Foundation Pit
- Long Duration of Construction

Our design of a dewatering and pressure relief of groundwater control system analyzed by experienced engineer and complex solution solved by DC dewatering software.



DEWATERING WELL POINT SYSTEM



WellPoint systems are a commonly used dewatering method as they are applicable to a wide range of excavations and groundwater conditions

Applications

- All Kinds of Excavation
- Trench Excavation
- Foundation Pit
- Underground Bldg. Excavation
- Thrust boring pit
- Anchor block excavation

Our MILLER type heavy duty pumps provides a range of high and low output pumping system for water. all our well pointing dewatering pumps are fitted with high capacity vacuum pumps, allowing the maximum draw-down and highest number of well points to be installed per pump. Our self-priming diesel powered dewatering pumps which are high efficiency pumps are equipped with Vacuum Kits at the suction side of the dewatering pumps are ideal as they are fully automatic self-priming type pumps powered by either diesel or electric motors.





مؤسسة تحسين الأرض للمقاولات
Ground Improvements Contracting Est.

Hilal Al Jazeera



CONTACT US

P.O. Box 10794 - Door No. 3 - Office No. 8
Al Muhammadiyah - Dammam 31961
Kingdom of Saudi Arabia
Mobile : 059 9085 661 - 054 5021 510
E-mail: hilalaljazeera@gmail.com

www.hilalaljazeera.com